

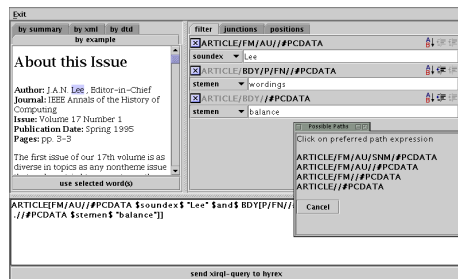
## HyGate – HyREX’s User Friendly Interface

### Problems:

- complex syntax of query languages for XML retrieval
- visualization of retrieval results:
  - take into account structural dependencies between result items

### Solutions:

- query formulation agent: query by example
- use of text bars and tree maps for visualization of retrieval results

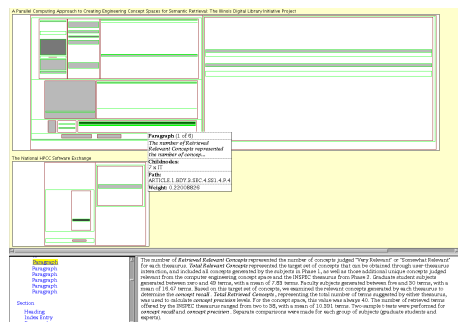
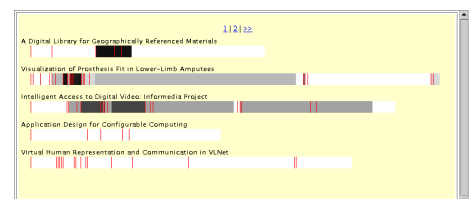


### Query formulation agent: Query by example

- content-oriented *and* structural query conditions are created by selection from examples
- as example, either the DTD, the logical structure, or the final layout of a given document can be used
- query conditions can be combined by logical operators

### Result visualization: Overview

- each document in the result is represented by a text bar
- colors reflect probability of relevance of document parts



### Result visualization: document view

- documents are represented by tree maps: logical structure shown by nested rectangles
- colors reflect probability of relevance of document parts

